



**For a long and lasting impression**

R S D T e c h n i k G m b H



# Able with cable

For 80 years, the name Wetzel has stood for printing. But not for printing in the conventional sense. Wetzel stands for expertise in "unconventional printing".

To most people, "print media" are books, newspapers, and magazines. Not to us. To us, any product with a relatively smooth surface is a print medium. From pills to wallpaper. From pipes and profiles, cables to cartons. Belts, bands and tapes. Plastics and textiles. We are active in the field of industrial contact printing,

using direct and offset printing techniques. Because of worldwide activities and also for strategic reasons the "cable and pharma print" Division became independent 1999 and a new company was founded, the **RSD Technik GmbH**. With us you can benefit not only from a broad experience but also from our technological leadership in reprographics.

*"Talk to us. Together, we'll put the print on your product."*

## The big wide world of RSD Technik

As in other fields, RSD Technik offers one-stop shopping in the field of cableprint. Whatever your needs are, RSD Technik meets them. From consulting to logistics support. From preventive maintenance to emergency service. From viscosity control devices and print simulators to consumables such as inks, offset rings, and tools. If it's cableprint-related, we deliver.

## RSD Technik worldwide

With the intensifying demand on the market the globalisation through alliances with Gillies Technologies in the USA and RSD Technik in Asia, we are now one of the largest suppliers for the cable and hose industries in the world.

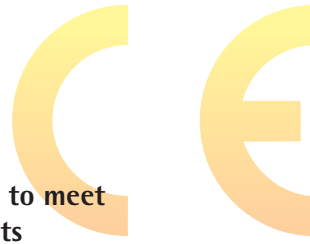
## There when you need us

Machine downtime and production shortfall are costly. That's why we have a 24-hours print-wheel emergency service designed to get production up and running again in the shortest possible time.

Naturally, our quality management system for design, development, production, installation, and maintenance is certified in accordance with ISO 9001: 2000



# Wheel changes at 90 km/h



Cable plants typically extrude at around 1500 m/min. Our cableprint machines are designed to provide consistent, high-quality printing of cables at full speed, downstream of the extruder. Due to frequent changes in cable labeling (and printing of other extruded products), we have developed machines with four printstations, allowing printwheels to be changed on the fly. Wheel changes at 90 km/h.

Our state-of-the-art range of cableprint machines is designed to meet every need - with direct and offset printing of all extruded products. Take a look at the technical highlights. The details are impressive.

- ✦ High-speed printing at up to 1.500 m/min
- ✦ Electronic cable/printwheel speed synchronization
- ✦ Up to 4 printwheels
- ✦ Automatic printwheel change for non-stop extruder operation
- ✦ Automatic viscosity control
- ✦ Electronically controlled printing
- ✦ Direct and offset printing

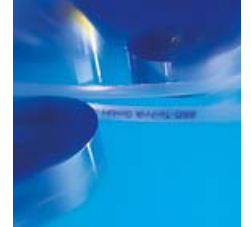
## The smart way to meet CE requirements

New CE safety requirements must be met. What is the best way to do this? Retrofit existing cableprint machines? Or invest in new ones? Often, investment in new cableprint machines is the better choice. Moving your production to the state of the art - with all the benefits of low cost of ownership and operation.

## Take a look at the features and benefits RSD Technik cableprint machines have to offer

All RSD Technik cableprint machines have a range of standard features, including:

- ✦ High standard of safety, CE conformance
- ✦ Quick setup and easy operation, cleaning and maintenance by untrained personnel for low operating costs
- ✦ High quality materials used for construction, such as stainless steel and aluminium for long, problem-free service life



### CP4R

#### Great features:

*Electronic control via tachometer*

*Built-in print simulator with LCD display to minimize set-up time and wastage*

*Stroboscope for optimal scraper setting, inking and injection angle.*

*Automatic ink pump unit with ink cooler*

*Ink injection system with replaceable nozzles for various printwheel widths*

*Fast motor-driven print height adjustment from 900 to 1200 mm*

*4 printstations for plane and concave printwheels*

*Print direction selectable as option (left to right or right to left)*

### CP1E

*Same wide range of features, but with only one printstation*

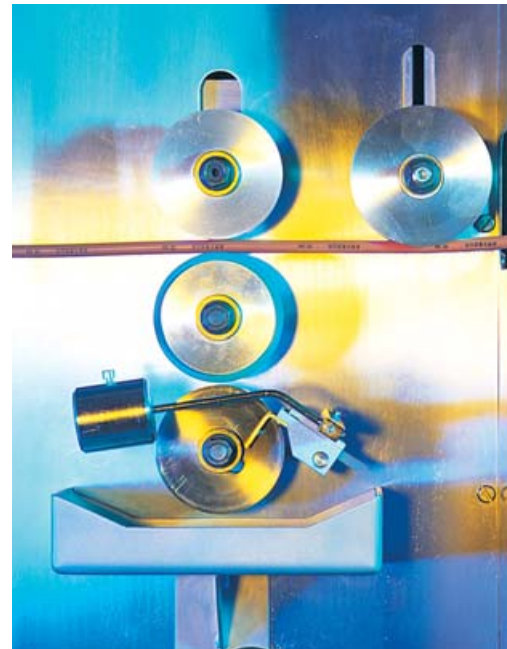




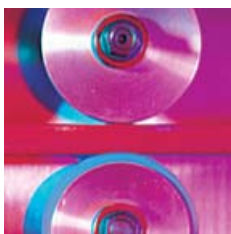
CP4R "Formula 1" direct printing machine



CP1E budget version



CP1Mi detail of offset printing machine



### CP4R

Our "Formula 1" direct printing machine. With 4 printwheels and auto changer for wheel changes at 90 km/h. Plus other great features.

### CP1E

A budget version of the CP4R offering the same wide range of features, but with only one printstation.

### CP1Mi

This is our universal offset printing machine for all types of extruded products – cables, tubes, hoses, profiles, and tapes – allowing printing of up to 50% of the product diameter. And other features.

### CP1Mi

#### Great features:

*Perfect printing on uneven surfaces*

*Printing speed up to 200 m/min with printwheel immersion in ink bath*

*Printing speed up to 450 m/min with inkjet system*

*Printwheel and rubber wheel driven by rubber friction wheel*

*No friction between product and printwheel*

*Hysteresis drive to overcome machine friction*

*Fast motor-driven print height adjustment from 900 to 1200 mm*

*Print direction selectable as option (left to right or right to left)*

# Precision in steel

Quality. Speed. Reliability. Three key criteria for successful cable production. All RSD Technik products are designed to help you to attain these goals.

## Speed<sup>2</sup>, and more

Take RSD Technik printwheels for example. Their quality is unsurpassed.

### Speed 1:

This technology allows us to make them in record time. State-of-the-art laser engraving allows us to manufacture a printwheel to your specifications – for any make or model of machine – in a matter of hours. With an unparalleled range of characters, types and styles, a range of screens and line cuts. And with any symbol or logo you would like.

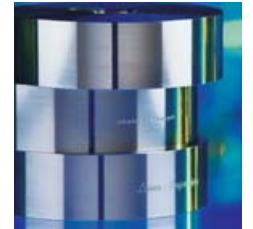
### Speed 2:

Because speed is of the essence, our printwheels are designed to operate at full extrusion speed. Sprintwheels, if you like.

And our printwheel service is backed by the expertise of our leadership in industrial reprographics. RSD Technik Cableprint technology – unique quality.

## Engraving at the speed of light

Laser engraving is the state of the art. Our laser engraving service offers decisive benefits. Such as consistently high quality and resolution. Absolutely constant depth of engraving for smooth, consistent ink application. And, because we're so fast, a 24-hour emergency service. All these benefits contribute to making your production more efficient, more cost-effective. Helping you stay ahead of the competition. And improving your bottom line.



### Laser-engraving printwheels

*For direct and offset printing*

*Plan-faced printwheels for coverage of up to 30% of cable diameter*

*Concave-faced printwheels for coverage of up to 40% of cable diameter*

*Offset printing for coverage of up to 50% of cable diameter and for printing of rough surfaces*

*Full range of halftone screens and line-cuts*

*Hardened steel printwheels plated with chrome*

*Embossing wheels positive or negative engraved*



## **RSD Technik's world**

**Talk to us!** Would you like to know more?



### **RSD Technik GmbH**

Walter Wetzel Straße 2 · D-79588 Efringen-Kirchen  
Tel.: +49 7628 8020 · Fax +49 7628 80280  
E-Mail: [sales@rsdtechnik.de](mailto:sales@rsdtechnik.de)  
Internet: [www.rsdtechnik.de](http://www.rsdtechnik.de)



### **W. Gillies Technologies Ltd.**

250 Barber Avenue · Worcester, MA 01606 - USA  
Tel.: +001 508 852 2502 · Fax +001 508 852 6453  
E-Mail: [sales@wgillies.com](mailto:sales@wgillies.com)



### **RSD Hi-Tech Industrial (Shenzhen) Co. Ltd.**

West Part of the First Floor, Building B, Bright Way Industrial Zone  
Huangtian, Xixiang Baoan District, Shenzhen - P. R. China  
Tel.: +86 755 2751 3377 · Fax +86 755 2751 2877  
E-Mail: [sales@rsd-shenzhen.com.cn](mailto:sales@rsd-shenzhen.com.cn)



### **RSD Hi-Tech Industrial (Shanghai) Co. Ltd.**

1/F, No. 8, 1225 Lane, Tongpu Road  
Putuo District, Shanghai - P. R. China  
Tel.: +86 21 3202 3282 · Fax +86 21 3202 3283  
E-Mail: [sales@rsd-shanghai.com.cn](mailto:sales@rsd-shanghai.com.cn)



### **Ziraba SA**

Poligono Landaben Calle D, Apartado 412  
31012 Pamplona - ESPAÑA  
Tel.: 34 948 18 70 20 · Fax +34 948 18 70 22  
E-Mail: [ventas@ziraba.com](mailto:ventas@ziraba.com)

